

# A MAJOR

A B C# D E F# G# A

## RIGHT HAND



Mid C

A diagram of a piano keyboard showing the right hand's fingering for the A major scale. The notes are A, B, C#, D, E, F#, G#, A. Fingerings are indicated by numbers 1-5 below the notes. Black circles highlight the sharps: C#, F#, G#, C#, F#, G#. The sequence of notes is: A (1), B (2), C# (3), D (1), E (2), F# (3), G# (4), C# (3), D (1), E (2), F# (3), G# (4), A (5).

A musical staff in treble clef with a key signature of three sharps (F#, C#, G#). The notes of the A major scale are written as quarter notes: A, B, C#, D, E, F#, G#, A, C#, D, E, F#, G#, A.

## LEFT HAND



Mid C

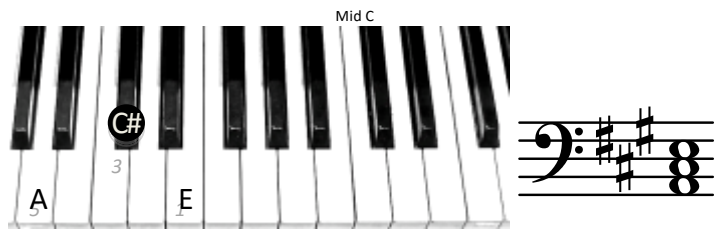
A diagram of a piano keyboard showing the left hand's fingering for the A major scale. The notes are A, B, C#, D, E, F#, G#, A. Fingerings are indicated by numbers 1-5 below the notes. Black circles highlight the sharps: C#, F#, G#, C#, F#, G#. The sequence of notes is: A (5), B (4), C# (3), D (2), E (1), F# (3), G# (2), C# (3), D (2), E (1), F# (3), G# (2), A (1).

A musical staff in bass clef with a key signature of three sharps (F#, C#, G#). The notes of the A major scale are written as quarter notes: A, B, C#, D, E, F#, G#, A, C#, D, E, F#, G#, A.

F#

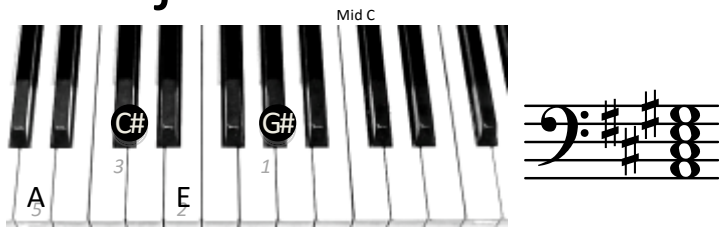
# Left hand chords

## A



## Amaj7

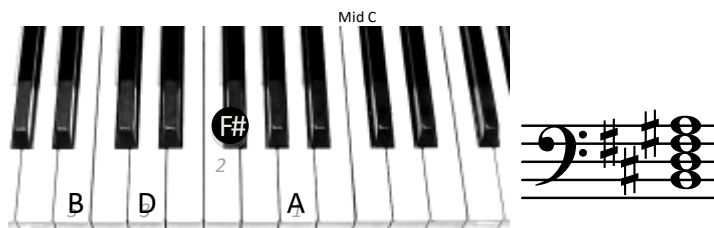
F#



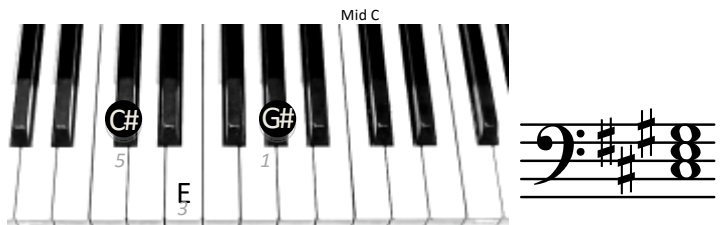
## Bm



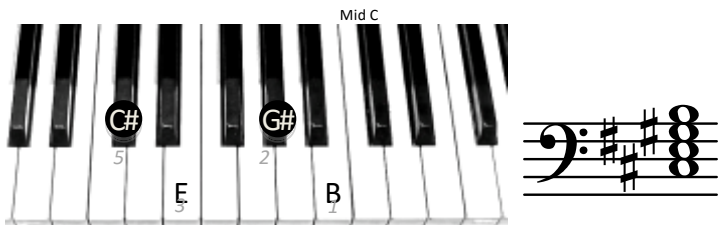
## Bm7



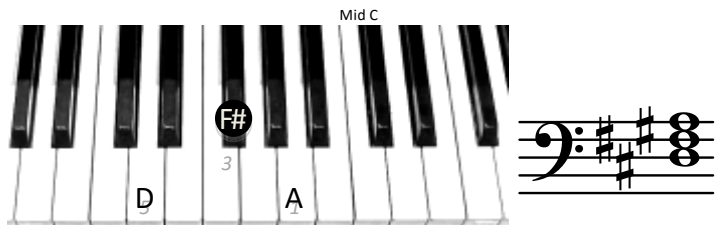
## C#m



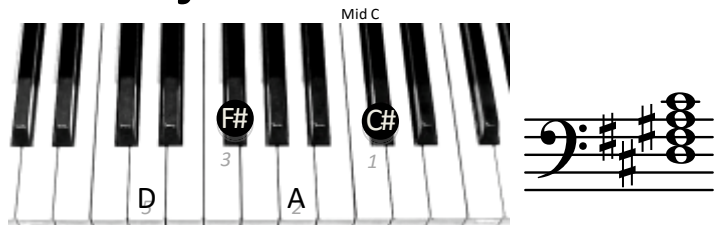
## C#m7



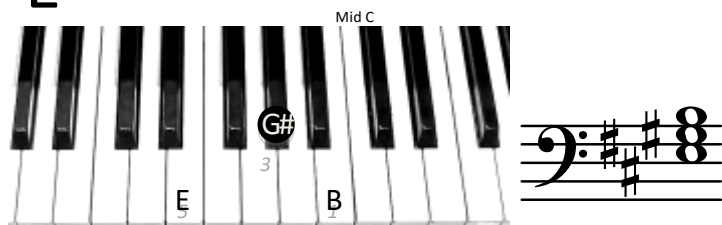
## D



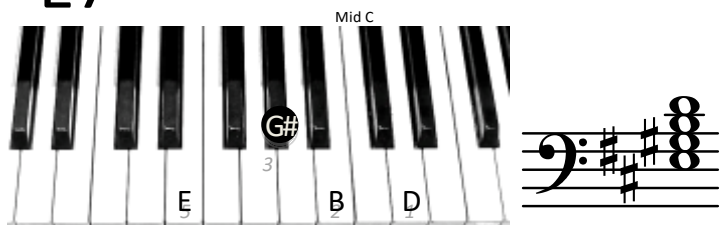
## Dmaj7



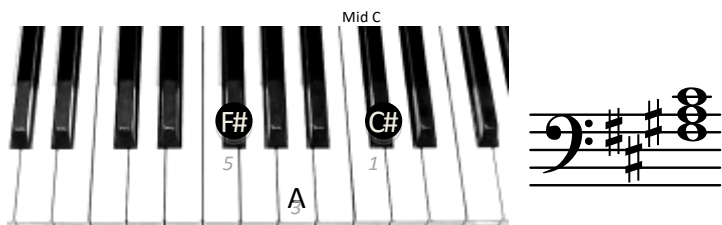
## E



## E7



## F#m



## F#m7

