

# Bb MAJOR

Bb C D Eb F G A Bb

## RIGHT HAND



Mid C

The diagram shows a section of a piano keyboard. The black keys Bb, Eb, Bb, Eb, Bb are circled in black. Below them are the white keys C, D, F, G, A. Fingerings are indicated by numbers 1-5. For the black keys, the first Bb is finger 2, the first Eb is finger 3, the second Bb is finger 4, the second Eb is finger 3, and the third Bb is finger 4. For the white keys, C is finger 1, D is finger 2, F is finger 1, G is finger 2, and A is finger 3. This sequence is repeated three times.

A musical staff in treble clef with a key signature of two flats (Bb and Eb). The notes are: Bb, Eb, Bb, Eb, Bb, C, D, F, G, A, C, D, F, G, A, Bb. The notes are written as quarter notes.

## LEFT HAND



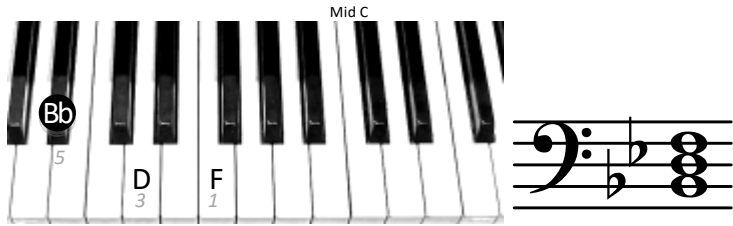
Mid C

The diagram shows a section of a piano keyboard. The black keys Bb, Eb, Bb, Eb, Bb are circled in black. Below them are the white keys C, D, F, G, A. Fingerings are indicated by numbers 1-5. For the black keys, the first Bb is finger 3, the first Eb is finger 4, the second Bb is finger 3, the second Eb is finger 4, and the third Bb is finger 2. For the white keys, C is finger 2, D is finger 1, F is finger 3, G is finger 2, and A is finger 1. This sequence is repeated three times.

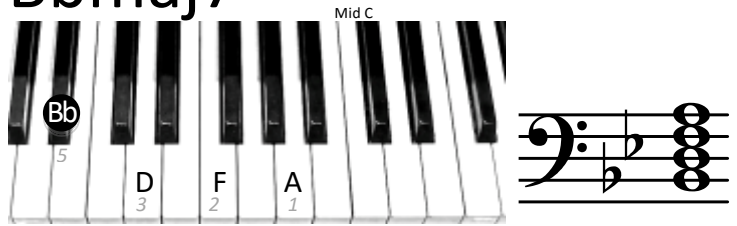
A musical staff in bass clef with a key signature of two flats (Bb and Eb). The notes are: Bb, Eb, Bb, Eb, Bb, C, D, F, G, A, C, D, F, G, A, Bb. The notes are written as quarter notes.

# Left hand chords

## Bb



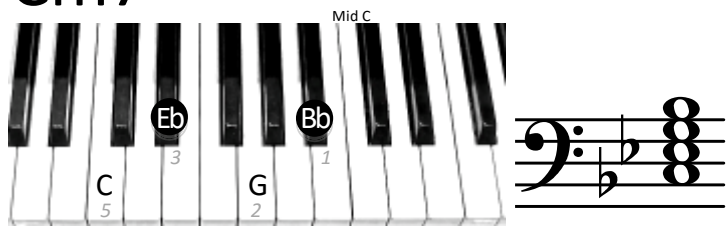
## Bbmaj7



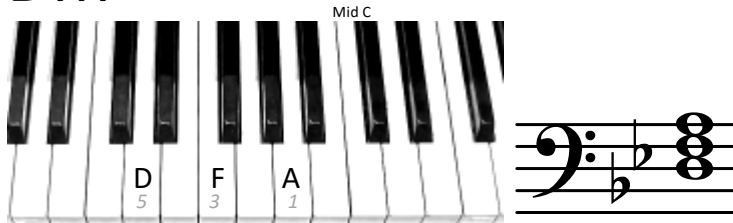
## Cm



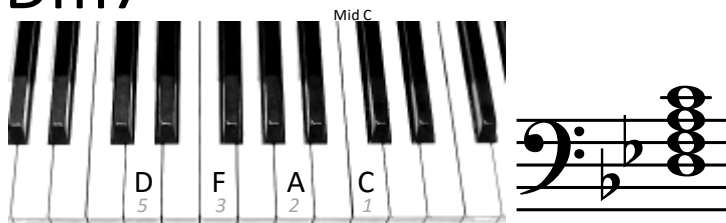
## Cm7



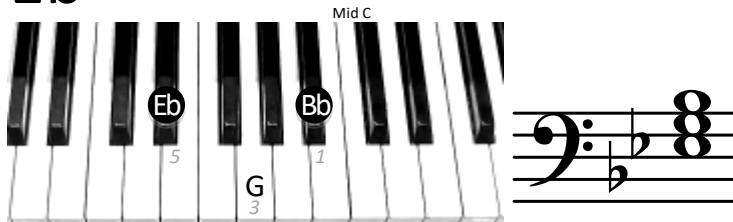
## Dm



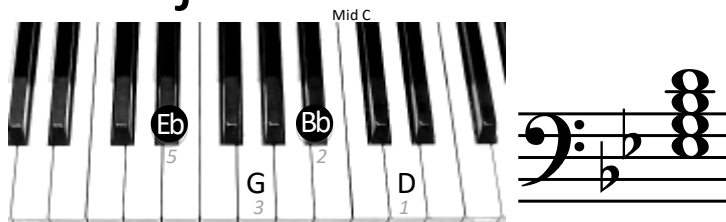
## Dm7



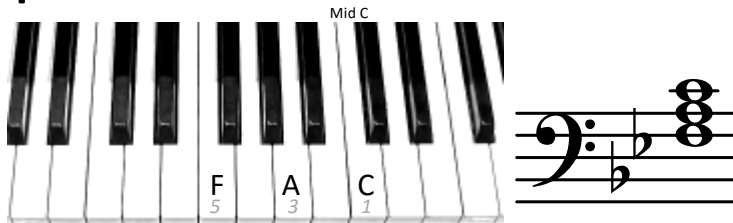
## Eb



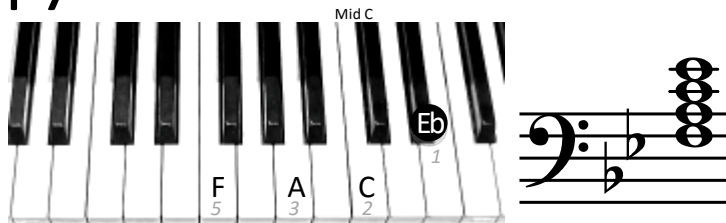
## Ebmaj7



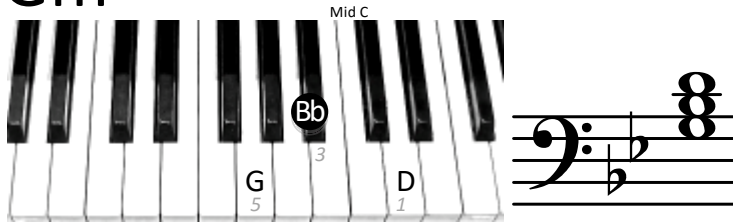
## F



## F7



## Gm



## Gm7

